

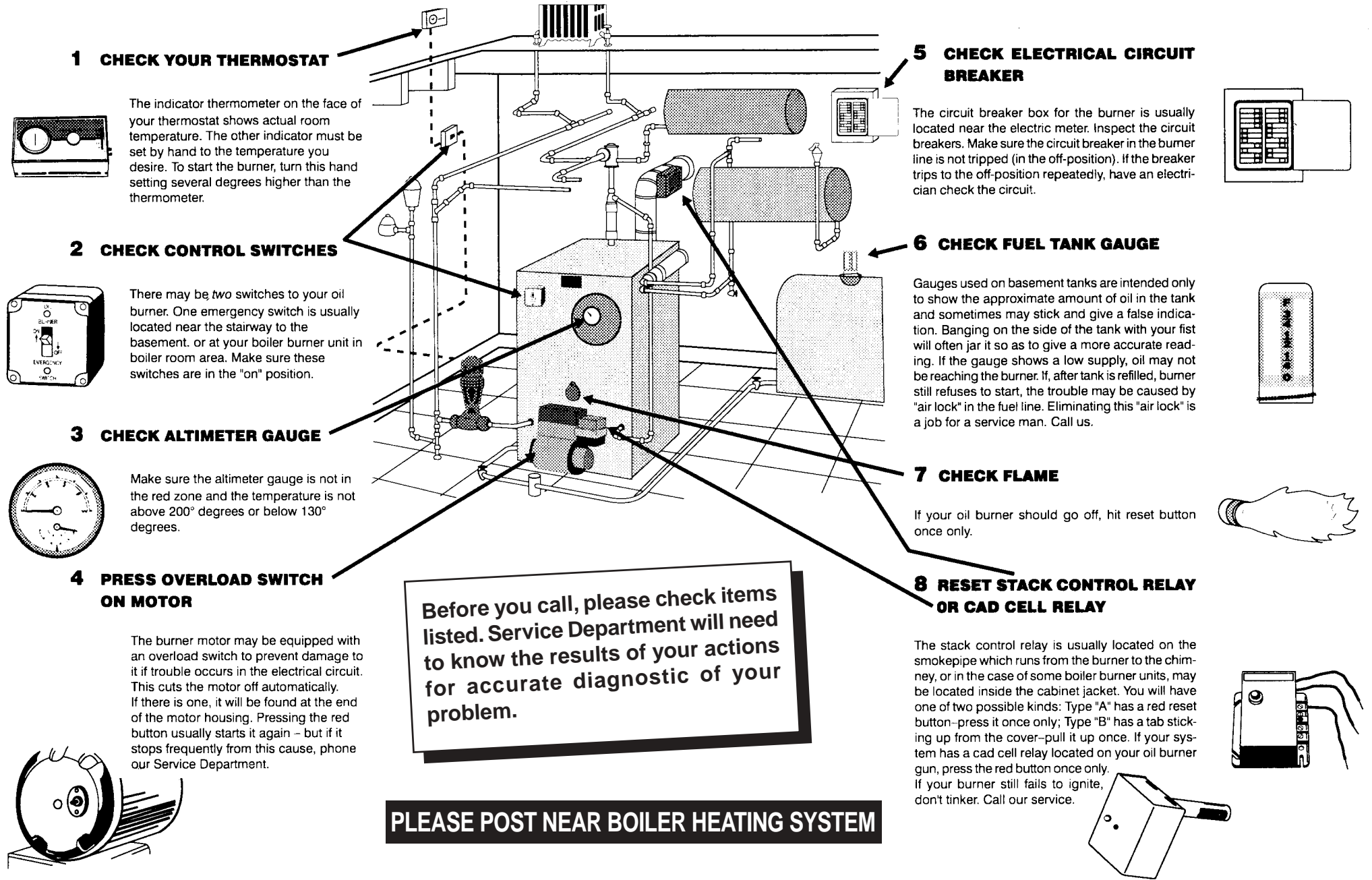
THE TOTAL HOMEOWNER HEATING SYSTEM SELF CHECK GUIDE

HOT WATER SYSTEM

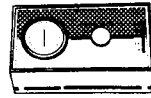
8 home-heating money-savers

- 1 Have your oil burner checked annually to assure proper lubrication and economical operation.
- 2 Have your furnace or boiler cleaned once a year – preferably in the summer, before the Fall heating season.
- 3 Should leaks occur in radiators or fittings call a plumber immediately.
- 4 Investigate home insulation. There are several methods, all of which will help keep heat in and cold out.
- 5 Keep doors, windows and fireplace flues closed when not in use.
- 6 Install thermal windows – use weatherstripping. Cover outside windows or wall unit air conditioners.
- 7 Close off radiators and registers in rooms which you do not use.
- 8 If your burner stops, try the eight "checks" described to the right. If unsuccessful, call us and describe exactly what checks you have made. This will help us determine what your service requirements may be and will result in the quickest possible service.

DO NOT TOUCH ANYTHING - JUST FAMILIARIZE YOURSELF WITH THE LOCATION OF THE CHECK POINTS SO THAT NO TIME WILL BE WASTED SHOULD YOUR BURNER STOP.

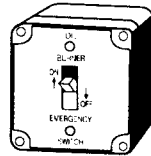


1 CHECK YOUR THERMOSTAT



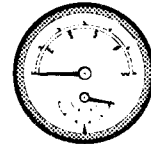
The indicator thermometer on the face of your thermostat shows actual room temperature. The other indicator must be set by hand to the temperature you desire. To start the burner, turn this hand setting several degrees higher than the thermometer.

2 CHECK CONTROL SWITCHES



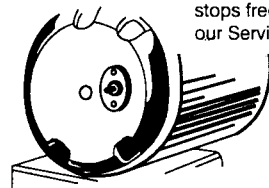
There may be two switches to your oil burner. One emergency switch is usually located near the stairway to the basement, or at your boiler burner unit in boiler room area. Make sure these switches are in the "on" position.

3 CHECK ALTIMETER GAUGE



Make sure the altimeter gauge is not in the red zone and the temperature is not above 200° degrees or below 130° degrees.

4 PRESS OVERLOAD SWITCH ON MOTOR

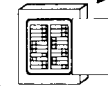


The burner motor may be equipped with an overload switch to prevent damage to it if trouble occurs in the electrical circuit. This cuts the motor off automatically. If there is one, it will be found at the end of the motor housing. Pressing the red button usually starts it again – but if it stops frequently from this cause, phone our Service Department.

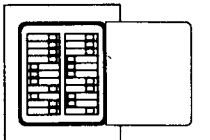
Before you call, please check items listed. Service Department will need to know the results of your actions for accurate diagnostic of your problem.

PLEASE POST NEAR BOILER HEATING SYSTEM

5 CHECK ELECTRICAL CIRCUIT BREAKER

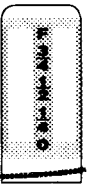


The circuit breaker box for the burner is usually located near the electric meter. Inspect the circuit breakers. Make sure the circuit breaker in the burner line is not tripped (in the off-position). If the breaker trips to the off-position repeatedly, have an electrician check the circuit.



6 CHECK FUEL TANK GAUGE

Gauges used on basement tanks are intended only to show the approximate amount of oil in the tank and sometimes may stick and give a false indication. Banging on the side of the tank with your fist will often jar it so as to give a more accurate reading. If the gauge shows a low supply, oil may not be reaching the burner. If, after tank is refilled, burner still refuses to start, the trouble may be caused by "air lock" in the fuel line. Eliminating this "air lock" is a job for a service man. Call us.



7 CHECK FLAME

If your oil burner should go off, hit reset button once only.



8 RESET STACK CONTROL RELAY OR CAD CELL RELAY

The stack control relay is usually located on the smokepipe which runs from the burner to the chimney, or in the case of some boiler burner units, may be located inside the cabinet jacket. You will have one of two possible kinds: Type "A" has a red reset button—press it once only; Type "B" has a tab sticking up from the cover—pull it up once. If your system has a cad cell relay located on your oil burner gun, press the red button once only. If your burner still fails to ignite, don't tinker. Call our service.

